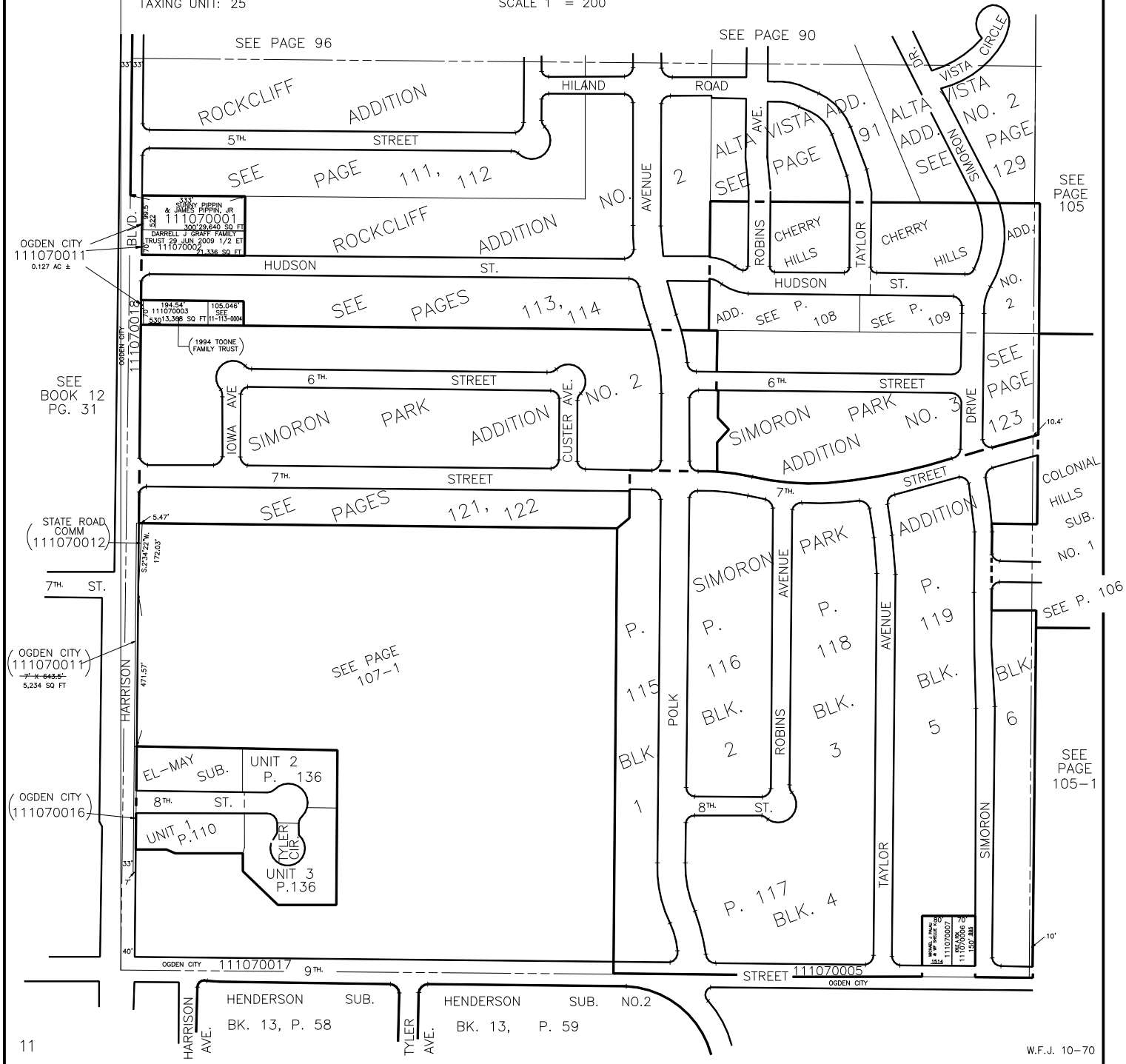


S.W. 1/4 OF
SECTION 15, T.6N., R.1W., S.L.B. & M.

TAXING UNIT: 25

IN OGDEN CITY
SCALE 1" = 200'

ALSO SEE PAGE 107-1



OGDEN CITY
111070011
0.127 AC ±

SEE
BOOK 12
PG. 31

(STATE ROAD
COMM
111070012)

(OGDEN CITY
111070011)
7-X-643-5-
5,234 SQ FT

(OGDEN CITY
111070016)

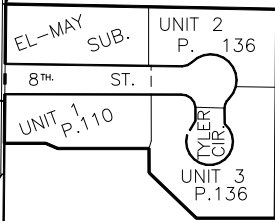
331
SUNNY BIRPIN
& JAMES BIRPIN, JR.
111070001
300 29.640 SQ FT
DARRELL J. CROFF FAMILY
TRUST 29 JUN 2009 1/2 ET
AL. 111070002
336 SQ FT

194.54'
111070003
105.046'
330 13,398 SQ FT
11-115-0004

1994 TOONE
FAMILY TRUST

5.47'
3,234.22 W.
172.03'

471.57'



OGDEN CITY 111070017

STREET 111070005
OGDEN CITY